

# CAN CHINESE ARTS NOW

—— 當代華人藝術 ——

**FESTIVAL**  
19 JANUARY  
2 FEBRUARY  
2019

[chineseartsnow.org.uk](http://chineseartsnow.org.uk)

Photo Credit: Alissa Anne Jeun Yi by Katt Webster

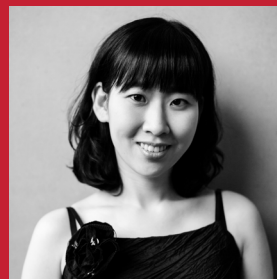
# Welcome to CAN Festival 2019

'Chinese' – what does this word mean to you? Lion dances, food and Beijing opera? These are wonderful traditions from China. But they are just that – traditions. In reality, Chinese people live contemporary lives in contemporary society, like everyone else in the world. Chinese culture is not just what happened in China during the time of the Emperors or the Cultural Revolution. Chinese culture today reflects China today and also the people of Chinese origin who live in many different parts of the world. Some of us have integrated into our new societies, some of us embrace our unique heritage, and some of us choose both roads! We all have different perspectives because 'Chinese' is not a single identity but one that is formed by many individuals with many different experiences. There are many contemporary Chinese stories which have not yet been told.

It is an exciting moment. Chinese Arts Now is enabled by funding from Arts Council England to present contemporary and innovative works reflecting Chinese stories and perspectives. We want to create and advance understanding of contemporary Chinese/British Chinese experiences. We aim to engage different communities and cultures through the power of the arts.

Intriguingly, I have often been asked by people, 'are there Chinese artists?' We are proud to show that there are! We have an excellent and extremely talented British Chinese line-up for our first ever CAN Festival in 2019. We have contemporary stories about Chinese people living in the UK and their perspectives on Chinese history, creative concerts combining Chinese and European musical styles, a cross-artform piece combining Debussy with a classical Chinese story, contemporary dance based on calligraphy, boundary-pushing live art that questions what 'Chineseness' means, an educational Mandarin experience for young families, and last but not least, an augmented reality tour of Chinatown. As you can see it's a packed schedule, covering a lot of ground!

I would like to invite you to join us – to experience stories and sounds you've never heard and images you've never seen.



An-Ting Chang  
CEO & Artistic Director

# CHINESE ARTS NOW FESTIVAL 2019

## Contents

- THEATRE** Gwei Mui // Ghost Girl 鬼妹 - Jennifer Tang **p4**
- THEATRE** Love Songs - Alissa Anne Jeun Yi **p5**
- THEATRE & DANCE** Scratch Night **p6**
- LIVE ART** Neither Here Nor There - Jo Fong and Sonia Hughes **p6**
- DANCE** Red INK - Si Rawlinson & Wayward Thread/Blowin' in the Wind **p7**
- THEATRE** Citizens of Nowhere? - Chinese Arts Now **p8**
- THEATRE** Lao Can Impression - Chinese Arts Now & Concert Theatre **p9**
- THEATRE** Nanjing - Jude Christian & Elayce Ismail **p10**
- IN PROFILE** Si Rawlinson **p11**
- FAMILY** Boh Boh Finds Home - Little Bean Theatre **p12**
- MUSIC** Ping Pong Concert - Chinese Arts Now **p12**
- MUSIC** LSO Eclectica - East Meets West - Keting Sun, LSO, Silk String Quartet **p13**
- MUSIC** Global Soundscapes - Belle Chen **p14**
- MUSIC** Tangram - New Chinese Music **p15**
- CHINATOWN** Augmented Chinatown - Donald Shek **p16**
- CHINATOWN** Lucky Ping-Pong Dragon Karaoke - Gasp-C **p18**
- THEATRE/LIVE ART** The Moon is Warmer than the Sun - Whiskey Chow **p19**
- FILM** Chinese Visual Festival **p20**
- FILM** Filming East **p21**
- IN PROFILE** Belle Chen **p22**
- WORKSHOPS** **p23**
- VENUES & VENUE MAP** **p24**
- CAN ON TOUR, ABOUT CAN, EARLY BIRD OFFER, SUPPORT** **p26**
- EVENT CALENDAR** **p28**
- SPONSORS, PARTNERS & THANKS** **p31**

## THEATRE

PREMIERE

# GHOST GIRL // GWEI MUI 鬼妹

Jennifer Tang

**Tue 22<sup>nd</sup> January - Sat 26<sup>th</sup> January, 7.15pm**  
**Post Show Q&A - Wed 23<sup>rd</sup> January**

*Hot clammy day in October. A Chinese takeaway restaurant. A decision. A woman was going to take another woman's baby. She thought she was getting a chow mein and instead she got a baby. Six months later. Top floor of a hospital. A woman called Janice and a man called Phil took home a baby girl. Me.*

Theatremaker Jennifer Tang was born to Cantonese parents but raised by a white British family. Based on her story, this touching and highly theatrical show asks what it really means to be British and Chinese, and how family, love and belonging all shape who and what we are.

Supported using public funding by Arts Council England. Commissioned by Camden People's Theatre. Developed with the support of Theatre Royal Plymouth, Shoreditch Town Hall and China Exchange.

The production continues at Camden People's Theatre until 9th February.

Venue Camden People's Theatre

Tickets £12/£10, £20/15 Double Bill with

Love Songs

Booking Info [www.cptheatre.co.uk](http://www.cptheatre.co.uk)

Running Time 60 mins

Website [www.jennifertang.co.uk](http://www.jennifertang.co.uk)

Twitter @gwei\_mui

Facebook Ghost Girl Gwei Mui

Hashtag #gweimui

Age 12+ (contains strong language)

**“Jennifer Tang has crafted a production that stands up as a vividly realised theatrical experience...”**

The Stage

Review for 'Mountains: The Dreams of Lily Kwok'

## THEATRE

# LOVE SONGS

Alissa Anne Jeun Yi

**Tue 22<sup>nd</sup> January - Sat 26<sup>th</sup> January, 9pm**  
**Post Show Q&A - Wed 23<sup>rd</sup> January**

Alissa Anne Jeun Yi's show mixes get-on-the-dance-floor music, rap and spoken word; exploring the personal and political puzzles of our love lives through the autobiographical poems of a hopeless romantic. A classic tale of classroom crushes and awkward bedroom encounters, a cautionary guidebook on navigating the millennial dating scene, and a glimpse under the covers at our deepest desires and the all-consuming fear of ending up alone. A one-woman show (about many men) that is surprisingly relatable, but just a little bit different. Why? Because ultimately, this is a story about learning to love yourself.

Trip Hazards was recently named by The Guardian as one of five of the UK's best emerging theatre companies.

**Venue** Camden People's Theatre  
**Tickets** £12/£10, £20/15 Double Bill  
with Ghost Girl // Gwei Mui 鬼妹  
**Booking Info** [www.cptheatre.co.uk](http://www.cptheatre.co.uk)  
**Running Time** 60 mins  
**Website** [www.alissaajycooper.com](http://www.alissaajycooper.com)  
**Twitter** @alissa\_ajy  
**Facebook** Trip Hazards  
**Hashtag** #LoveSongsShow  
**Age** 16+ (contains reference to sexual violence)

**“Honest in a way that’s genuinely rare on stage”**

The Guardian

**“Intelligently comic”**

The List



## THEATRE & DANCE

### SCRATCH NIGHT

Jia-Yu Corti & Owen Ridley-DeMonick,  
Emma Clark, Lucy Chau Lai-Tuen

**Mon 21<sup>st</sup> January, 7pm**

An evening of works in progress, CAN's festival scratch night is part of its ongoing artist development work. The evening includes a new dance work called 'Snakes' by duo Owen Ridley-DeMonick and Jia-Yu Corti, a performance dealing with archetype, identity, desire and the blurring of reality and fantasy. Theatre maker Emma Clark also presents 'Gold Mountain' about the California Gold Rush, family heritage, and the erasure of voices from historical narratives. Writer Lucy Chau Lai-Tuen's 'Conversations with my Unknown Mother' is a tale of trans-cultural adoption and identity spanning three generations of women across two continents.

**Venue** Soho Theatre

**Tickets** £12/£10

**Booking Info** [www.sohotheatre.com](http://www.sohotheatre.com)

**Running Time** 120 mins

**Website** [www.sohotheatre.com](http://www.sohotheatre.com)

**Twitter** @sohotheatre

**Facebook** Soho Theatre

**Hashtag** #CANSscratch19

## LIVE ART

### NEITHER HERE NOR THERE

Jo Fong & Sonia Hughes

**Tue 22<sup>nd</sup> - Thu 24<sup>th</sup> January**

Funny, intimate, political, a bit livid, powerful, powerless and patient. Sonia and Jo host a series of conversations that happen over 6 minutes. In Neither Here Nor There Jo and Sonia have questions about how it's all going, big unfathomable questions about the world, small questions about the state of your garden. Complexity takes time, it requires multiple voices, many levels of expertise. They'd like you to join the conversation. Sonia Hughes and Jo Fong are two middle-aged international provincial artists.

This project has been inspired by research undertaken by Frank Bock and Katy Coe. Commissioned by Peilot, Chapter's associate artist programme and LAUK Diverse Actions.

**Venues** Chinese Community Centre (22nd - 2pm)

Toynbee Studios (23rd - 6pm & 8.30pm)

Photographer's Gallery (24th - 11am & 2.30pm)

**Tickets** £12/£10

**Booking Info** [www.ticketsignite.com](http://www.ticketsignite.com), [www.artsadmin.co.uk](http://www.artsadmin.co.uk)

**Running Time** 90 mins

**Website** [www.jofong.com](http://www.jofong.com)

**Twitter** @JoFong

**Hashtag** #NHNT

**Age** 16+

**"A leap of faith"**

CCQ Magazine

**"A rare experience"**

Art Scene in Wales

**DANCE****RED INK****Si Rawlinson & Wayward Thread****Thu 24<sup>th</sup> January - Sat 26<sup>th</sup> January, 7.00pm****Post Show Q&A - Thu 24<sup>th</sup> January**

When 'maintaining cultural values' marks the difference between freedom of expression and imprisonment, exile or worse, a writer's life hangs on his words. An international cast of male dancers embodies the struggle between the desires of a state and its citizens, and the pursuit of truth. Bodies fly and ink runs... An artful and pulse-quickening mix of break/hip hop and contemporary dance, Red INK was created by up-and-coming British-Asian choreographer Si Rawlinson's company Wayward Thread. Produced by Step Out Arts and funded by Arts Council England. Commissioned and supported by Attenborough Arts Centre, Bedford Creative Arts, Breakin' Convention, Chinese Arts Now, Curve Theatre, Dare to Devise and Southbank Centre.

**"Boundary-breaking dance art chiming for change"**

**Kate Hagan, The Wonderful World of Dance**

**Venue** Rich Mix**Tickets** Red INK - £12/£10

Blowin' In The Wind - £5

**Booking Info** [www.richmix.org.uk](http://www.richmix.org.uk)**Running Time** Red INK - 55 mins

Blowin' In The Wind - 30mins

**Website** [www.waywardthread.co.uk](http://www.waywardthread.co.uk)**Instagram** [wayward.thread](https://www.instagram.com/wayward.thread)**Twitter** @DanielPhuuung**Facebook** Wayward Thread, Daniel Phung

Dance

**Hashtag** #redink**Age** 12+**DANIEL PHUNG SCRATCH****BLOWIN' IN THE WIND - Sat 26<sup>th</sup> January, 5.30pm**

Choreographer Daniel Phung presents dance scratch 'Blowin' in the Wind', about social issues revolving around men. Presented through CAN's artist development programme. Book for both shows, and enjoy a drink in between.



Photo Credit: Ikin Yum

## THEATRE

# CITIZENS OF NOWHERE

A Chinese Arts Now Production

**26<sup>th</sup> January & 2<sup>nd</sup> February** (3pm & 5pm),  
**28<sup>th</sup> & 29<sup>th</sup> January** (6.30pm), **30<sup>th</sup> January** (12pm)

A funny and moving real-time live audio drama by award-winning writer, Ming Ho and directed by David Jiang. British-Chinese matriarch Linda Lo (Pik-Sen Lim) has come to London to announce a decision to her son Jun Chi (Siu Hun Li) and daughter, Jane (Jennifer Lim); but ambitious Jane has big news of her own, while Jun Chi is mystified by their mother's refusal to engage with plans for his upcoming wedding. With Brexit on the horizon, it's a crossroads for all three...

This intimate performance by actors seated among the audience is experienced through headphones, as if eavesdropping, and includes refreshments. Headsets generously provided by Ours Travel. Generously supported by Hong Kong Economic and Trade Office, London. With thanks to Beijing 707N Theatre, Duddell's and Perrier-Jouët.



Venue Duddell's

Tickets £18 (includes tea or mocktail)

£20 (includes cocktail)

£25 (includes cocktail and appetiser)

£50 (includes cocktail and post-show meal)

**Booking Info** [www.ticketssignite.com](http://www.ticketssignite.com)

**Running Time** 45 mins

**Website** [www.duddells.co/london/](http://www.duddells.co/london/)

**Twitter** @DuddellsLondon

**Facebook** Duddell's London

**Hashtag** #citizensofnowhere?

**Age** 12+

**“... a nuanced and compelling look at the evolution of identity...”**

[oughttobeclowns.com](http://oughttobeclowns.com)





Photo Credit: Chen Chou Chang

## THEATRE/MUSIC

# LAO CAN IMPRESSION

Co-produced by CAN & Concert Theatre

**Sat 26<sup>th</sup> January, 7.30pm (Preview)**

**Wed 30<sup>th</sup> January, 7.45pm**

Concert Theatre re-imagines the concert form, creating performances interweaving music and drama. Debussy's music will be performed side by side with 'The Travels of Lao Can' (老殘遊記) by Liu in a contemporary setting. The performance fuses Debussy's imagination of the East and Liu's attitude towards Westernisation. Featuring music by Debussy including La Mer, Images, Cello Sonata. Co-produced by CAN and Concert Theatre.

The piece is directed by CAN's artistic director An-Ting Chang, with the performers Hua-Chien Hsu and Chih-I Chang (actors), Li-Chi Chiang (piano), Yun-Ju Chen (flute), Jen-Hsin Kung (cello) and design by Wang Jing. Production generously supported by our airline partner EVA Air. With thanks to Queen Mary's University London.



**Venue** Bernie Grant Arts Centre 26th (Preview), Southbank Centre - Purcell Room at Queen Elizabeth Hall 30th  
**Tickets** £11-£18

**Booking Info** [www.berniegrantcentre.co.uk](http://www.berniegrantcentre.co.uk)  
[www.southbankcentre.co.uk](http://www.southbankcentre.co.uk)

**Running Time** 80 mins

**Website** [www.concerttheatre.org](http://www.concerttheatre.org)

**Twitter** @concerttheatr

**Facebook** Concert Theatre

**Hashtag** #laocan

**“This is more than a play with incidental music, or music with a dollop of drama: Concert Theatre aims to be a perfect amalgam of both art forms”**

Financial Times on Concert Theatre



## THEATRE

# NANJING

Written and performed by Jude Christian, directed by Elayce Ismail

**Thu 31<sup>st</sup> January, 7.30pm & Post Show Q&A**

“Can I ask you to do something for me? Shut your eyes, just for a moment, and count on your fingers all the things you would be willing to die for.”

Nanjing is a monologue about identity, flawed heroes, and the consequences of war. Written and performed by Jude Christian, Nanjing is a personal response to the Nanjing Massacre of 1937, frequently referred to as the Rape of Nanking. Simultaneously delicate and epic, this poignant direct address explores what it means to be mixed-race, and how it feels to belong both anywhere and nowhere. In an explosive time for political discourse around the world, Nanjing excavates what it is to love one another while fighting hatred, and how we can make sacrifices for pacifism.

Venue SOAS - Brunei Gallery Lecture Theatre

Tickets £12/£10

Booking Info [www.soas.ac.uk](http://www.soas.ac.uk)

Running Time 60 mins

Hashtag #NanjingPlay

Age 14+

**“Jude Christian’s hour-long monologue “Nanjing” punches you right in the gut then holds your hand as you come to. Whether you know nothing or everything about the Nanjing massacre, go see it.”**

Audience Member

Shakespeare’s Globe



## SI RAWLINSON

Hip hop and contemporary choreographer

### What drives you to make the work you do?

What drives me to make my work is the desire to say something about our times, to use art to move people in ways that might change their ideas, and make them feel more connected with what's going on around them. I am fascinated by how we can be so evolved and yet still form small political tribes in which other humans have no value. As an artist rooted in hip hop dance, I'm also passionate about making choreography that is visceral and exciting. I think great dance has a kind of magic, which is the reason I fell in love with it.

The show 'Red INK' was born from the massive protests in Hong Kong in 2014. I found it interesting how quickly the mainland started to reshape Hong Kong and the lives of its people. My father, who is British and was a policeman for the Royal Hong Kong police before the handover, was a figure of

colonialism – something that restricted Hong Kong's autonomy for 150 years, in much the same way as China. It makes me feel really conflicted...

The show is as much about art as political dissidence, as well as being an attempt to empathise with those individuals who make up structures of power. At a time when nationalism around the world is on the rise, it feels important that art reflects our need to question our complicity with what's happening around us, and our need to keep those who are in power in check.

**See Si perform 'Red INK' from Thursday 24th January to Saturday 26th January at Rich Mix.**  
**See page 7 for more details.**



## FAMILY

# BOH BOH FINDS HOME

Little Bean Theatre

**20<sup>th</sup> Jan & 2<sup>nd</sup> Feb** (Hatching Dragons) 11am & 2pm

**23<sup>rd</sup> Jan** (Chinese Community Centre) 11am & 2pm

Boh Boh Finds Home is an interactive adventure that allows families to travel through the galaxy together, stopping at different planets to help our friend Boh Boh the alien find home. We sing and dance through space, expanding vocabulary, working on motor skills and most of all having fun!

Little Bean is a theatre company focusing on Cantonese speaking children and families in the UK founded by a group of theatre, music and multi-arts practitioners based in London, most of whom are from Hong Kong. Performed in English, Mandarin and Cantonese. The Hatching Dragons performances are for children 2-7 years old. The LCCC performance is for school age children.

**“...Very catchy rhymes that we were still singing after the show...”**

Audience Member

**Venue** Chinese Community Centre,  
Hatching Dragons Bilingual Nursery (City)

**Tickets** £10/£8

**Booking Info** [www.ticketssignite.com](http://www.ticketssignite.com)

**Running Time** 60 mins

**Website** [www.littlebeantheatre.co.uk](http://www.littlebeantheatre.co.uk)

**Twitter** @LittleBean\_LBT

**Facebook** Little Bean Theatre

**Hashtag** #bohboh



## MUSIC

# PING PONG CONCERT

A Chinese Arts Now Production

PREMIERE

**Sun 20<sup>th</sup> January, 6.30pm**

This unique, playful and entertaining concert, features a live ping pong game played as percussion alongside a piano, clarinet and cello. Each composer involved has composed a piece based on a specific ping pong technique paired with a musical style.

The ping pong percussion is performed by Jasmine Yang (楊凌宇) and Glory Zhao (趙天吉) who both trained in leagues in China. Jasmine has also ranked number 8 in England. Together with the ping pong players, Jiarui Li (piano), Anna Hashimoto (clarinet) and Helena Švigelj (cello) will bring to life new pieces composed by Nicola Chang, The Mollusc Dimension, Alex Ho, Raymond Yiu and An-Ting Chang.

Commissioned by CAN and part of Southbank Centre's new music festival SoundState. With thanks to UK Chinese Ying-Hua Table Tennis Club 英華國球社.



**Venue** Southbank Centre, Queen Elizabeth Hall Foyer

**Tickets** Free and non-ticketed

**Running Time** 60 mins

**Website** [www.chineseartsnow.org.uk](http://www.chineseartsnow.org.uk)

**Twitter** @chineseartsnow

**Facebook** Chinese Arts Now



## MUSIC

# LSO ECLECTICA – EAST MEETS WEST

Keting Sun, LSO Strings & The Silk String Quartet

**Sun 27<sup>th</sup> January, 7pm**

As part of the LSO's East Meets West series, a string quartet from the London Symphony Orchestra and a traditional Chinese string quartet perform a mixture of European and Chinese music. The performance shows the influence of the two cultures on each other's musical traditions, culminating in an octet of the two quartets playing a new piece specially composed by Keting Sun (commissioned by Chinese Arts Now).

The Silk String Quartet is one of the Europe's best professional Chinese music ensembles for classical and contemporary music. Established in 2006, the Quartet has been invited to play prestigious festivals and venues, including the Royal Opera House, Southbank's Purcell Room, St George's in Bristol, the Sage Gateshead, the WOMEX, Manchester and Brighton and Guildford Festivals. The quartet is composed of Cheng Yu (Pipa), Chen Teng (Erhu), Reylon Yount (Yangqin), Qiao Zhiming (Guzheng).

**Venue** LSO St Luke's

**Tickets** £20/£15

**Booking Info** [www.lso.co.uk](http://www.lso.co.uk)

**Running Time** 120 mins

**Website** [www.lso.co.uk](http://www.lso.co.uk)

**Twitter** @lsostlukes

**Facebook** LSO St Luke's

**Hashtag** #Isosilk

### Programme

**Three & Six** (Traditional Chinese Tune)

**MOZART** Divertimento in F, K.138

**In the Remote Place** (Traditional Chinese Tune)

**RACHMANINOFF** Romance for String Quartet No 1

**ZHOU LONG** Selections from Chinese Folk Songs

**JOHAN FAMAËY** Dance of the Cavalry

**RAYMOND YIU** 'Maomao Yü' piano quintet

**KETING SUN** Octet for Silk and LSO String Quartet (World Premiere)

MUSIC

# GLOBAL SOUNDSCAPES

Belle Chen

PREMIERE

## Fri 25<sup>th</sup> January, 7.30pm Double Bill

The incomparable pianist Belle Chen performs a one-of-a-kind programme, integrating classical music, soundscapes, electronics, and improvisation to recreate locations from around the world. From the Mediterranean Sea, Istanbul, to Central Java in Indonesia, be transported by Belle's genre-defying approach to the concert experience and her unique way of presenting classical music. The performance features scent design by perfumery collective Les Flâneurs, which is integrated into the performance to create a truly immersive, evocative, and interactive experience, transporting listeners to locations around the world through sound, music, and fragrance.

Supported using public funding by the National Lottery through Arts Council England.

**Venue** LSO St Luke's

**Tickets** £18/£15, £12 concessions

**Booking Info** [www.lso.co.uk](http://www.lso.co.uk)

**Running Time** 60 mins

**Website** [www.bellechen.com](http://www.bellechen.com)

**Twitter** @bellepianist

**Facebook** Belle Chen Music

**Hashtag** #departure2019

**“At the forefront of the UK's new wave of experimental classical musicians”**

China Sohu News

MUSIC

# TANGRAM

New Chinese Music

PREMIERE

## Fri 25<sup>th</sup> January, 7.30pm Double Bill

Tangram is an artist collective that creates and curates new Chinese music. As accomplished musicians from various backgrounds, Reylon Yount (yangqin), Beibei Wang (percussion), Daniel Shao (flute), and Alex Ho (composition) share a common desire to explore conceptions of the Chinese diaspora in nuanced ways. Their work begins with reflections on personal experiences and extends to broader considerations of the complexities of cross-cultural life. In this concert, they will perform a range of contemporary pieces for yangqin, percussion, and flute, including the world premiere of a new work by Alex Ho.

### Programme

'Dance of the Yao Tribe' (Liu Tieshan and Mao Yu), 'Rituals and Resonances' (Alex Ho), 'Yi' (Beibei Wang), 'Back to Heaven' (Dong Zhou), 'Memory' (Chen Yi), New Piece (Alex Ho).

Venue LSO St Luke's

Tickets £18/£15, £12 concessions

Booking Info [www.lso.co.uk](http://www.lso.co.uk)

Running Time 45 mins

Website [www.tangramsound.com](http://www.tangramsound.com)

Hashtag #tangramsound



# AUGMENTED CHINATOWN

Guided Tours by Donald Shek

19<sup>th</sup>, 24<sup>th</sup>, 26<sup>th</sup>, 31<sup>st</sup> January, 2<sup>nd</sup> Feb - Various Times

Augmented Chinatown maps the streets of the current Chinatown from Rupert St. to Charing Cross Rd. The tour will be led by artist Donald Shek, and combines video installation and digital sculptures with insights into the past and future of Chinatown. Donald will share the layered histories of the area, the Chinese community and the Chinese diaspora, exploring the themes of identity, cultural symbolism and myth. The tour takes audience members through each of the digital installations from the early beginnings of the creation myth in Chinese mythology to the present day. Augmented Chinatown will bring new light to these stories and their links to other cultures such as the Tower of Babel, Prometheus and the Elysian Fields.

The tour will be accessible via an iOS app developed specifically to enable you to view the augmented reality. Scan the QR code or follow the website link to download the iOS app, which will be available to download a week prior to the guided tours. With thanks to Guanghwa Bookshop.

## Guided Tour Dates with the Artist:

Sat 19<sup>th</sup> Jan 2019 - 11am, 1pm and 3pm

Thur 24<sup>th</sup> Jan 2019 - 11am, 1pm

Sat 26<sup>th</sup> Jan 2019 - 11am, 1pm and 3pm

Thur 31<sup>st</sup> Jan 2019 - 11am, 1pm

Sat 2<sup>nd</sup> Feb 2019 - 11am, 1pm and 3pm

**Please arrive 15 minutes before your tour starts.**

The Tour will start from :  
Guanghwa Bookshop,  
112 Shaftesbury Avenue,  
London W1D 5EJ

Venue Various Chinatown locations - W1

Tickets £15/£10

Booking Info [www.ticketignite.com](http://www.ticketignite.com)

Running Time 60 mins

Website [www.donshiart.com](http://www.donshiart.com)

Twitter @Donshi1

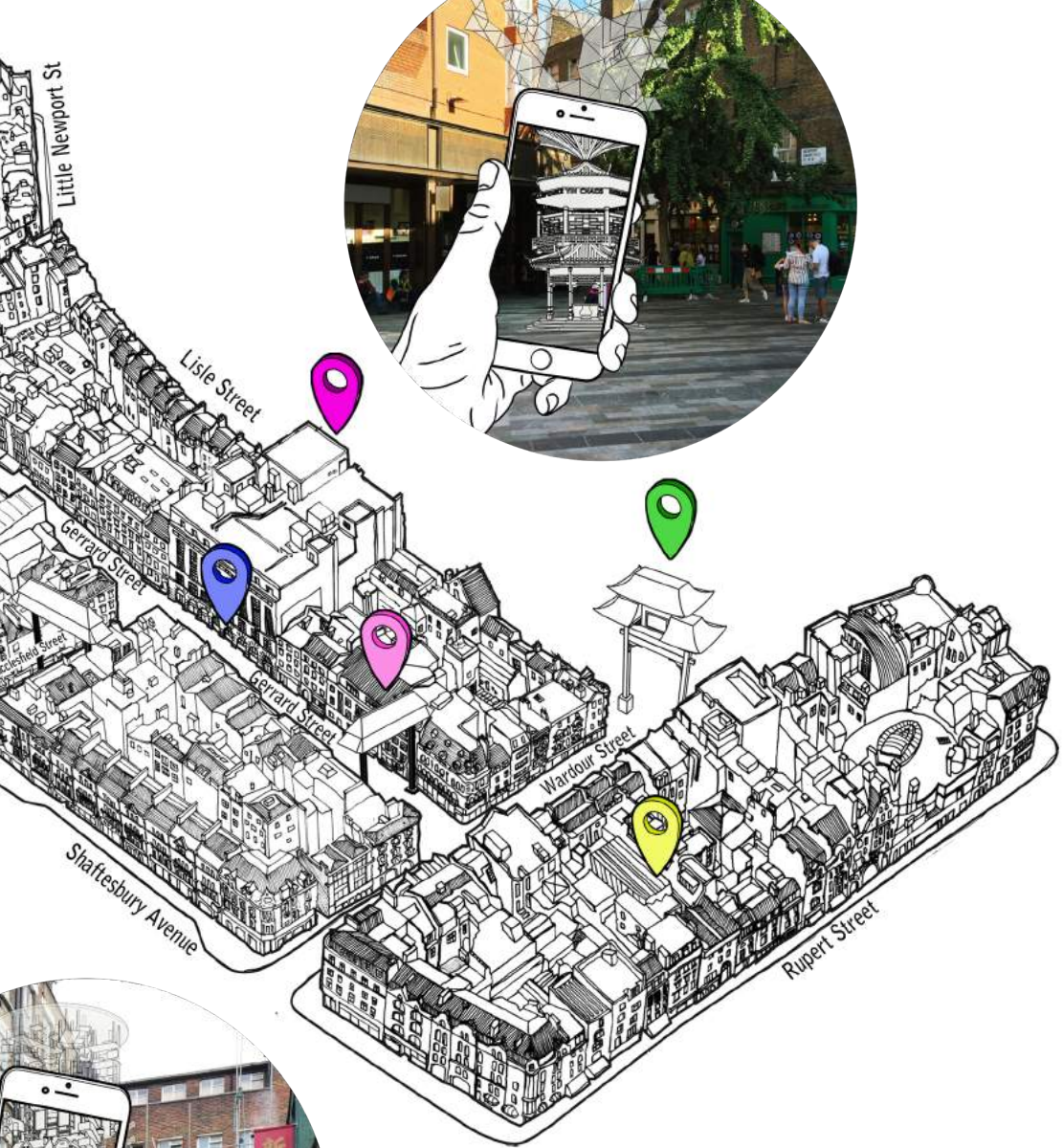
Facebook Donshi Art

Hashtag #augmentedchinatown

**If you are unable to make any of the tour times, you can still pick up a map of the installations from Guanghwa Bookshop**







**“...The territory no longer precedes the map, nor does it survive it...”**  
*Simulacra and Simulation,*  
 Jean Baudrillard



Scan this QR code to download the Augmented Chinatown iOS app  
 Available from 19th January



## CHINATOWN

# LUCKY PING-PONG DRAGON KARAOKE

Gasp-C

**Wed 30th & Thu 31st January, 7pm, 9.15pm**

Lucky Dragon Ping-Pong Karaoke is a performative karaoke event presented by four Pan-Asian artists who discuss issues around authenticity and identity through solo works. Audiences are invited to vote which artist they want to perform, with choices including cabaret, cooking, fortune telling, singing and some intense screams. Mixing performance acts, dance and popular hits in a karaoke room in Chinatown, this 18+ sited performance sets out to challenge stereotypes of 'Chineseness'. Devised and performed by Gasp-C (Burong Zeng, Howl Yuan, Mengting Zhuo & Zhiyue Hu).

This event contains foods/drinks, partial nudity, excessive noise and the possibility of getting wet. Earplugs and ponchos will be provided, please contact Burong (tania880601@gmail.com) if you have special dietary requests or any particular karaoke songs you want to sing.

**Venue** Royal Dragon Restaurant

**Tickets** £15

**Booking Info** [www.ticketsignite.com](http://www.ticketsignite.com)

**Running Time** 1hr 45mins

**Website** [www.lppdk.wordpress.com](http://www.lppdk.wordpress.com)

**Hashtag** #lppdk

**Age** 18+

**“...this show is sweet,  
whimsical, daring and fun  
all rolled into one...”**

Ruth Holdsworth

CAN's Senior Producer

**THEATRE/LIVE ART**

**PREMIERE**

# THE MOON IS WARMER THAN THE SUN

**Whiskey Chow**

**Thu 31st January & Fri 1st February, 8pm**

Whiskey Chow is a London-based artist and Chinese drag king. Coming from an activist background in China, Whiskey's practice engages with political issues, exploring female masculinity, stereotypes and cultural projections of Chinese/Asian identity with interdisciplinary performance, moving image and experimental sound pieces.

In this other-worldly performance, audiences will be immersed in a world created by Whiskey that explores ancient mythological and contemporary queer longing. Featuring moving image of the ancient god of queer love - the Rabbit God (兔兒神) by digital artist Haocheng Wu, the work is a rebellion against the normalization of queerness.

**Venue** Toynbee Studios

**Tickets** £12/£10

**Booking Info** [www.artsadmin.co.uk](http://www.artsadmin.co.uk)

**Running Time** 60 mins

**Website** [www.whiskeychow.com](http://www.whiskeychow.com)

**Instagram** [whiskey.chow](https://www.instagram.com/whiskey.chow)

**Hashtag** [#whiskeychow](https://www.instagram.com/whiskeychow)

**Age** 16+

**“Whiskey’s work troubles boundaries of gender, culture and time with a challenging intensity that brings art and activism together and rejects commercial appropriation of queerness.”**

Harriet Evans, University of Westminster/LSE

# CHINESE VISUAL FESTIVAL



## FILM

# CHINESE VISUAL FESTIVAL

Cutting edge cinema from the Chinese speaking world

**Wed 23<sup>rd</sup>, Fri 25<sup>th</sup>, Thu 31<sup>st</sup> January**

Chinese Visual Festival has been bringing the best in Chinese language independent films, documentaries, shorts and experimental to the UK since 2011. For our 2019 Chinese New Year programme, we are excited to be screening two of the most acclaimed Chinese documentaries of the last year – Zheng Qiong’s **A Way Out**, following three teenagers from different socio-economic backgrounds over six years, and Xiao Xiao’s **Turtle Rock**, depicting life in a remote mountainous village. We also present the UK Premiere of the Hong Kong hit **Men on the Dragon**, in which a collection of middle-aged men form a dragon boat racing team.

**Venue** BFI Southbank

**Tickets** £9-£12

**Booking Info** [www.bfi.org.uk](http://www.bfi.org.uk)

**Website** [www.chinesevisualfestival.org](http://www.chinesevisualfestival.org)

**Twitter** @CVF\_London **Facebook** Chinese Visual Festival

**Weibo** 中国视觉电影节 **WeChat** 中国视觉电影节

**Hashtag** #ChineseVisualFest



**Men on the Dragon** + Q&A + drinks

reception, Fiction – UK Premiere,

Hong Kong, 2018

Dir. Sunny Chan, 92 mins, In Cantonese with English subtitles.

**Friday 25th January, 18:30, NFT1.**

This screening is made possible by support from the Hong Kong Economic and Trade Office London.

**A Way Out**, Documentary – UK Premiere, China-Germany, 2017, Dir. Zheng Qiong, 94 mins, in Mandarin with English subtitles.

**Wednesday 23rd January, 20:30, NFT3**

**Turtle Rock**, Documentary – London Premiere, China, 2017

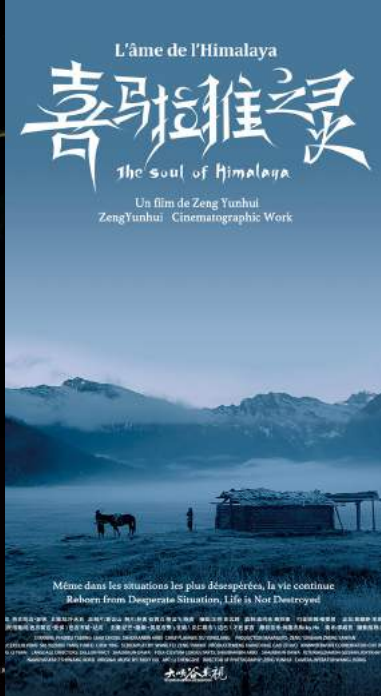
Dir. Xiao Xiao, 101 mins, In Mandarin with English subtitles

**Thursday 31st January, 20:30, NFT3**

THE FOUND THE PERFECT ESCAPE  
OTHERS COULD ONLY TRY

# SUSU

A YIXI SUN FILM



## FILM

# FILMING EAST

Bringing the best of Chinese cinema to Britain

Sun 27<sup>th</sup>, Wed 30<sup>th</sup>, Thu 31<sup>st</sup> January

Since 2007, Filming East Festival has been screening films that reflect the cultural richness and diversity of Chinese speaking regions. As part of CAN Festival 2019, Filming East will screen three award-winning contemporary films. 'The Fragile House' is a story of money, family ties and a dramatic New Year's eve culminating in a police station. 'The Soul of Himalaya' tells the story of the warriors of the Nuoba, a Chinese minority enduring hardship in Tibet to save their tribe. 'SUSU' narrates the story of two Chinese girls who visit a country mansion and discover the entangled English family secrets of a Kunqu Opera star, Susu, finding it almost impossible to escape.

Venue BFI Southbank

Tickets Non members - £11.50/£9.20 (concs), Members - £9.50/£7.20 concs

Booking Info [www.bfi.org.uk](http://www.bfi.org.uk)

Website [www.filmingeast.com](http://www.filmingeast.com)

Facebook Filming East Festival

WeChat FilmingEast

Hashtag #filmingeast



TREATY PORT VINEYARDS LTD



British Chinese Film Day

Sunday 27<sup>th</sup> January, NFT3

Filming East Shorts Award and Q&A - 12.50

A screening of the Filming East Short Film Award winners, featuring films produced by Chinese ethnicity filmmakers working in the UK across narrative, animation, fashion video and documentaries. 120 mins.

SUSU (素素) and Q&A - 15.15

Crime | Drama | Horror | Thriller, UK, 2018, Dir. Yixi Sun, 106 mins, in English and Mandarin

There will be a reception and networking event in the Blue Room at BFI Southbank at the end of the day. With thanks to Treaty Port Vineyards.

The Soul of Himalaya (喜馬拉雅之灵), Adventure | Drama | History - UK Premiere, China, 2018, Dir. Zeng Yunhui, 109 mins, in Tibetan with English subtitles. Wednesday 30<sup>th</sup> January, 20:20, NFT3

The Fragile House (海上城市), Drama - UK Premiere, China, 2018, Dir. Lin Zi, 85 mins, in Hokkien with English subtitles.

Thursday 31<sup>st</sup> January, 20:30, NFT3

# BELLE CHEN

Incomparable and groundbreaking pianist

## What drives you to make the work you do?

Imagine if for a moment, you live in a serene, quiet village in Northern Italy; the next moment, you're standing in the midst of a vibrant and crowded spice market in Istanbul; and the next, you're sitting on the steps of the Sacre Coeur, gazing at the moon and mourning the loss of a loved one.

Music is undeniably powerful in its ability to evoke. It is possible to experience everything and anything through music.

As an artist, there has always been only one driver for me: to create works that evoke moments when I have been touched by certain locations, cultures, or people; and to find imaginative and impactful ways to recreate these moments for audiences to experience through my music.

This vision naturally guides my musical direction. I am constantly exploring and experimenting – venturing from my base in classical music into the realms of sound design, electronics, improvisation, and extended techniques, carefully integrating these elements together to tell the stories I wish to tell.

My life goal is to create as many works as possible – accumulating these special life moments into substantial bodies of work, and allowing them to come back to life onstage and through recordings.

I hope you can join me on this journey.

**See Belle perform 'Global Soundscapes on Friday 25th January at LSO St Luke's. See page 14 for more details.'**

## Music Workshops with Southbank Centre

### PING PONG CONCERT

**Sun 20<sup>th</sup> January, 12.00-1.15pm**

In this entertaining workshop, musicians and composers will perform a piece of 'ping pong' music and explain how they use different rhythms and ping pong techniques to compose. Participants can then join in, to play ping pong themselves, to explore the percussive potential of ping pong, or to play a simple melody with instruments or their voice. Led by the musicians and composers, this workshop is suitable for all. This is a free workshop. See the What's On section on [www.southbankcentre.co.uk](http://www.southbankcentre.co.uk) for more details.

Presented as part of Soundstate Festival.

### CROSS GENRE COLLABORATION - THE COMPOSER AND THE PERFORMER

**Sun 20<sup>th</sup> January, 3.00-4.30pm**

In this practical session, Peter Wiegold will explain his techniques for composing, live devising and semi-improvised performance, developed over many years with performers from around the world.

Peter will be accompanied by two distinguished Chinese musicians. Do bring your instrument or your voice, some percussion instruments will be provided.

Peter is the director of Club Inégales where he has led over 100 gigs in 7 years with musicians from all over the world. In February he will launch a new 'world' orchestra at the Barbican Centre, The Third Orchestra with 25 musicians from across classical, jazz, folk, Asian, Middle-Eastern, South and North American, electronic and experimental music. This is a free workshop. See the What's On section on [www.southbankcentre.co.uk](http://www.southbankcentre.co.uk) for more details.

Presented as a part of Composers' Collective.

### DIRECTOR'S WORKSHOP SUPPORTED BY THE YOUNG VIC

**Thur 31<sup>st</sup> January & Fri 1<sup>st</sup> February, 11.00am-5.00pm**

This two-day director's workshop is open to all professional directors and theatre makers to explore the theatre making processes of David Jiang and Jude Christian. David Jiang has directed plays in the USA, UK, mainland China, Taiwan and Hong Kong. David was the Dean of the School of Drama at the Hong Kong Academy for Performing Arts for eight years. He is also the director of Citizens of Nowhere? at CAN Festival. Jude Christian has directed plays at the Royal Court, Sam Wanamaker Playhouse, Lyric Hammersmith and the Royal Exchange Manchester. She is the writer and performer of Nanjing at CAN Festival.

If you are interested in taking part please sign up by emailing [directorsprogramme@youngvic.org](mailto:directorsprogramme@youngvic.org) with a statement of up to 200 words about why you would like to take a part. We particularly encourage British Chinese/East Asian directors and theatre makers to sign up. The workshop will take place in London close to the Young Vic in Waterloo.

# CAN Festival Venues

## Venue List

### 1. BFI Southbank

Belvedere Rd  
Lambeth  
London  
SE1 8XT  
[bfi.org.uk](http://bfi.org.uk)

### 5. Guanghai Bookshop

112 Shaftesbury Ave  
London  
W1D 5EJ  
[cypressbooks.com](http://cypressbooks.com)

### 9. Rich Mix

35-47 Bethnal Green Rd  
London  
E1 6LA  
[richmix.org.uk](http://richmix.org.uk)

### 13. Southbank Centre

Southbank Centre  
Belvedere Road  
London  
SE1 8XX  
[southbankcentre.co.uk](http://southbankcentre.co.uk)

### 2. Camden People's Theatre

58-60 Hampstead Rd  
Kings Cross  
London  
NW1 2PY  
[cptheatre.co.uk](http://cptheatre.co.uk)

### 6. Hatching Dragons (City)

Ironmongers Hall  
Shaftesbury Place  
Off Aldersgate Street  
Barbican  
London  
EC2Y 8AA  
[hatching-dragons.com](http://hatching-dragons.com)

### 10. Royal Dragon Restaurant

30 Gerrard St  
London  
W1D 6JS  
[rdklondon.co.uk](http://rdklondon.co.uk)

### 14. Toynbee Studios

28 Commercial St  
London  
E1 6AB  
[artsadmin.co.uk](http://artsadmin.co.uk)

### 3. Chinese Community Centre

2 Leicester Court  
London  
WC2H 7DW  
[www.ccc.org.uk](http://www.ccc.org.uk)

### 7. LSO St. Luke's

161 Old St  
London  
EC1V 9NG  
[lso.co.uk/iso-st-lukes.html](http://lso.co.uk/iso-st-lukes.html)

### 11. SOAS

Bloomsbury  
London  
WC1H 0XG  
[soas.ac.uk](http://soas.ac.uk)

### 15. Young Vic

66 The Cut  
Waterloo  
London SE1 8LZ  
[youngvic.org](http://youngvic.org)

### 4. Duddells

9a St Thomas St  
London  
SE1 9RY  
[duddells.co/london](http://duddells.co/london)

### 8. Photographers' Gallery

16-18 Ramillies St  
Soho  
London  
W1F 7LW  
[thephotographersgallery.org.uk](http://thephotographersgallery.org.uk)

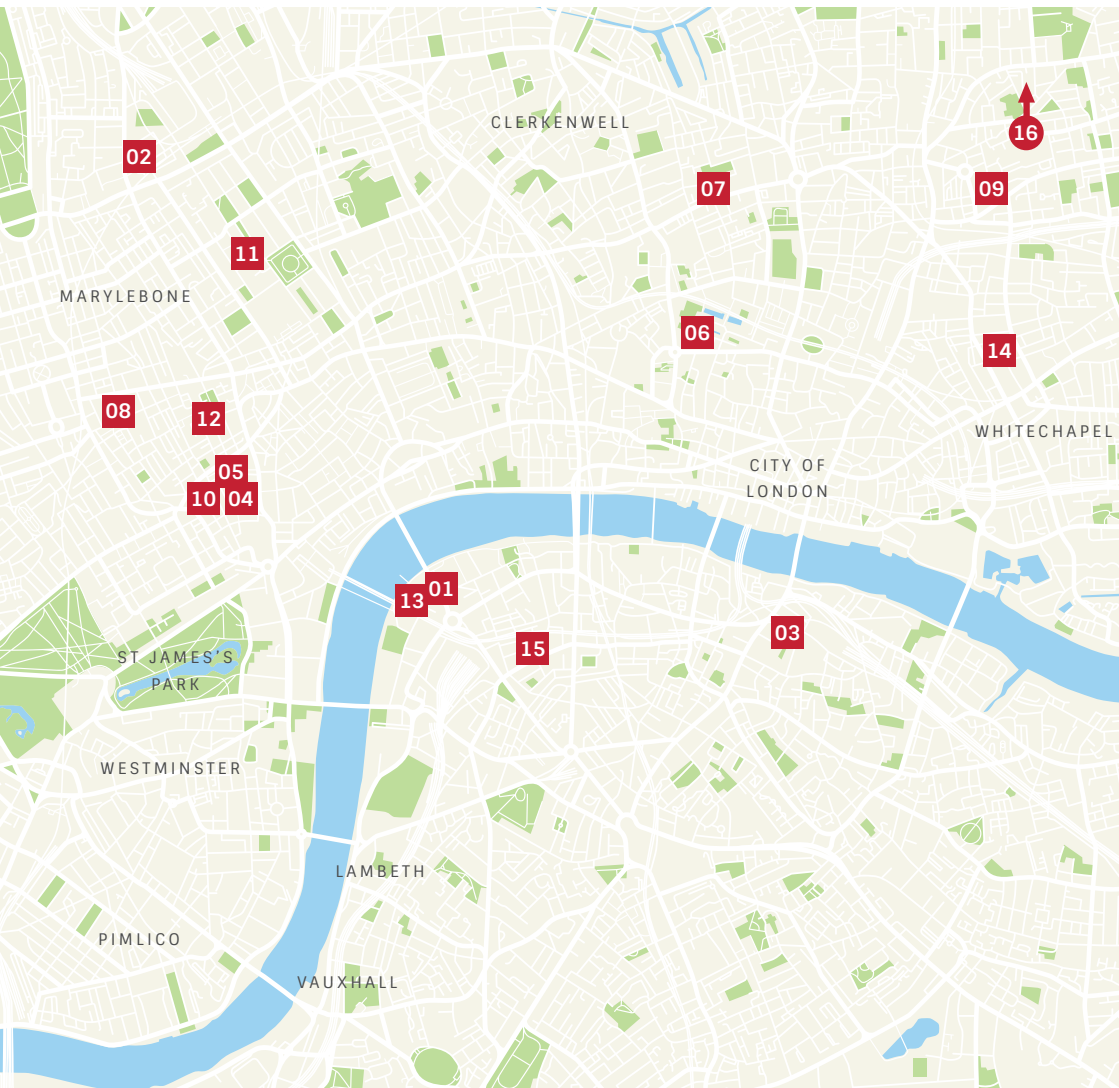
### 12. Soho Theatre

21 Dean St  
Soho  
London  
W1D 3NE  
[sohotheatre.com](http://sohotheatre.com)

### 16. Bernie Grant Arts Centre

Town Hall  
Approach Rd  
Tottenham Green  
London  
N15 4RX  
Not shown on map







## CAN on Tour – Citizens of Nowhere?



Can't make it to the London performances of 'Citizens of Nowhere'??  
CAN is taking this production on tour to Nottingham.

**Mon 4<sup>th</sup> February, 6.00pm & 8.00pm**

Djanogly Gallery Café, Nottingham Lakeside Arts,  
University Park, Nottingham, NG7 2RD

## About Chinese Arts Now

Chinese Arts Now (CAN) is the first National Portfolio Organisation awarded by Arts Council England to produce high quality Chinese art that reflects Chinese stories and themes in contemporary and innovative ways.

Originally founded in 2005 as Chinese/Chinatown Arts Space, CAN has built an extensive network of partner organisations interested in Chinese talent.

While CAN Festival is our main showcase for British Chinese artists, we also work with artists throughout the year to commission and develop contemporary performing and visual arts, and to create a bridge for collaborations with artists of Chinese and East Asian origin. We want as many people as possible to experience the wealth of talent that British Chinese artists have to offer.

## EARLYBIRD DISCOUNTS BEFORE 21<sup>ST</sup> DECEMBER 2018

Promotion Code (All venues\*): EBCAN

Promotion Code (LSO St Luke's): 25119

\*For performances at Camden People's Theatre, no code is needed.

Discount does not apply to concessions tickets.



Photo Credit: Chen Chou Chang

## CAN on Tour – Lao Can Impression



Can't make it to the London performances of 'Lao Can Impression'? CAN is taking this production on tour to Nottingham and Chepstow.

**Fri 1<sup>st</sup> February, 7.30pm**

Djanogly Theatre, Nottingham Lakeside Arts,  
University Park, Nottingham, NG7 2RD

**Sat 2<sup>nd</sup> February, 7.30pm**

Drill Hall, Lower Church Street,  
Chepstow, NP16 5HJ



Cyngor Celfyddydau Cymru  
Arts Council of Wales

## Pioneer Supporters

CAN would like to thank the following donors for their generous support of CAN Festival 2019. Their support has allowed us to deliver an ambitious programme for the first ever CAN Festival.

朱卡通, Hanue Chan, Chen-Kuang Chang, Chi-Hsien Chu, Wendy Huang, Nicholas James, Annie Lee, Michelle Lin, Sino Pac Securities Europe Ltd, Christine Yau.

CAN is a not-for-profit organisation working to support British Chinese artists and introduce contemporary British Chinese arts to the public. We rely on individual donations, grants and sponsorship to carry out this work.

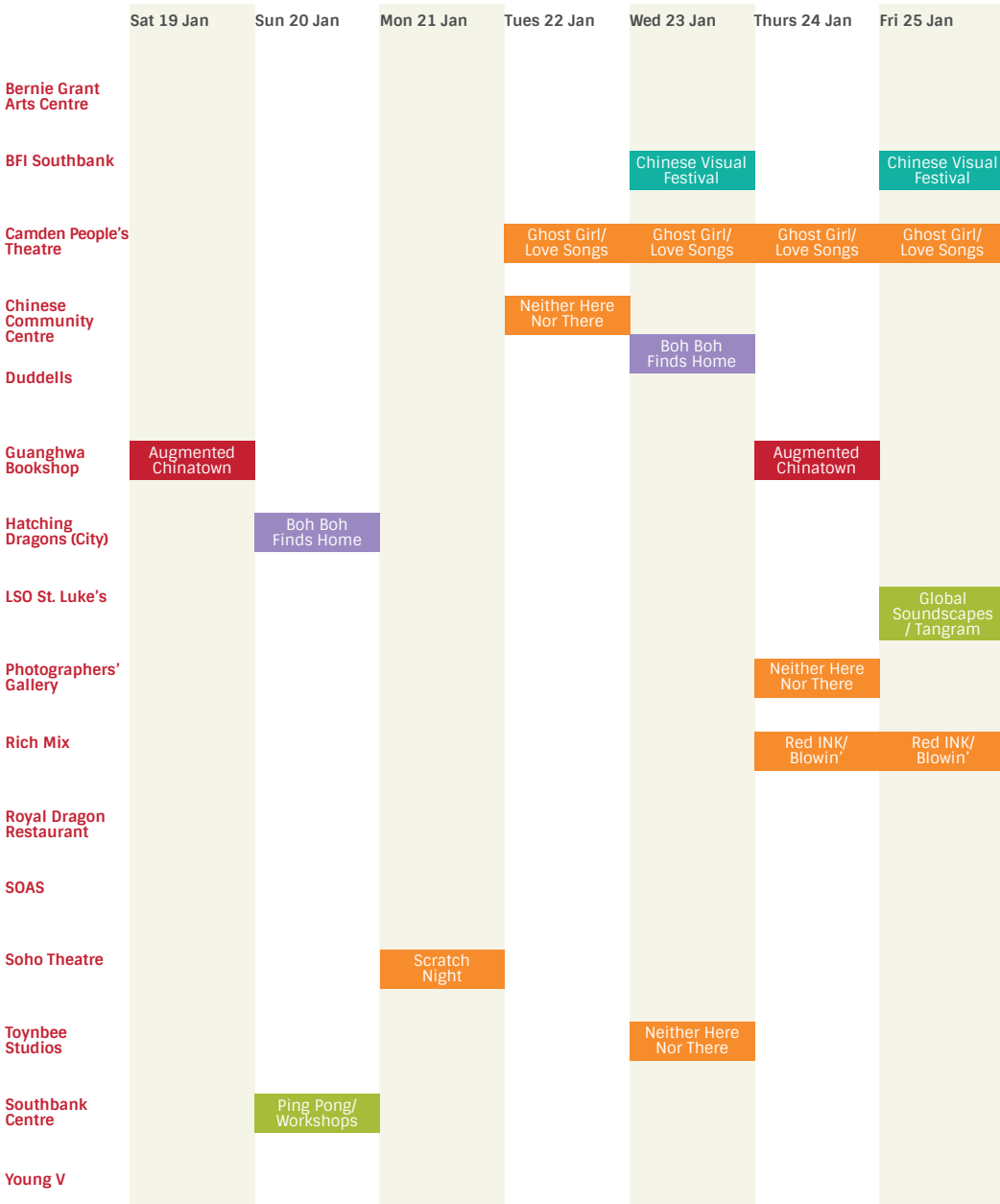
If you would like to support CAN, you can donate at [www.chineseartsnow.org.uk/support](http://www.chineseartsnow.org.uk/support) or contact [support@chineseartsnow.org.uk](mailto:support@chineseartsnow.org.uk) for more information.

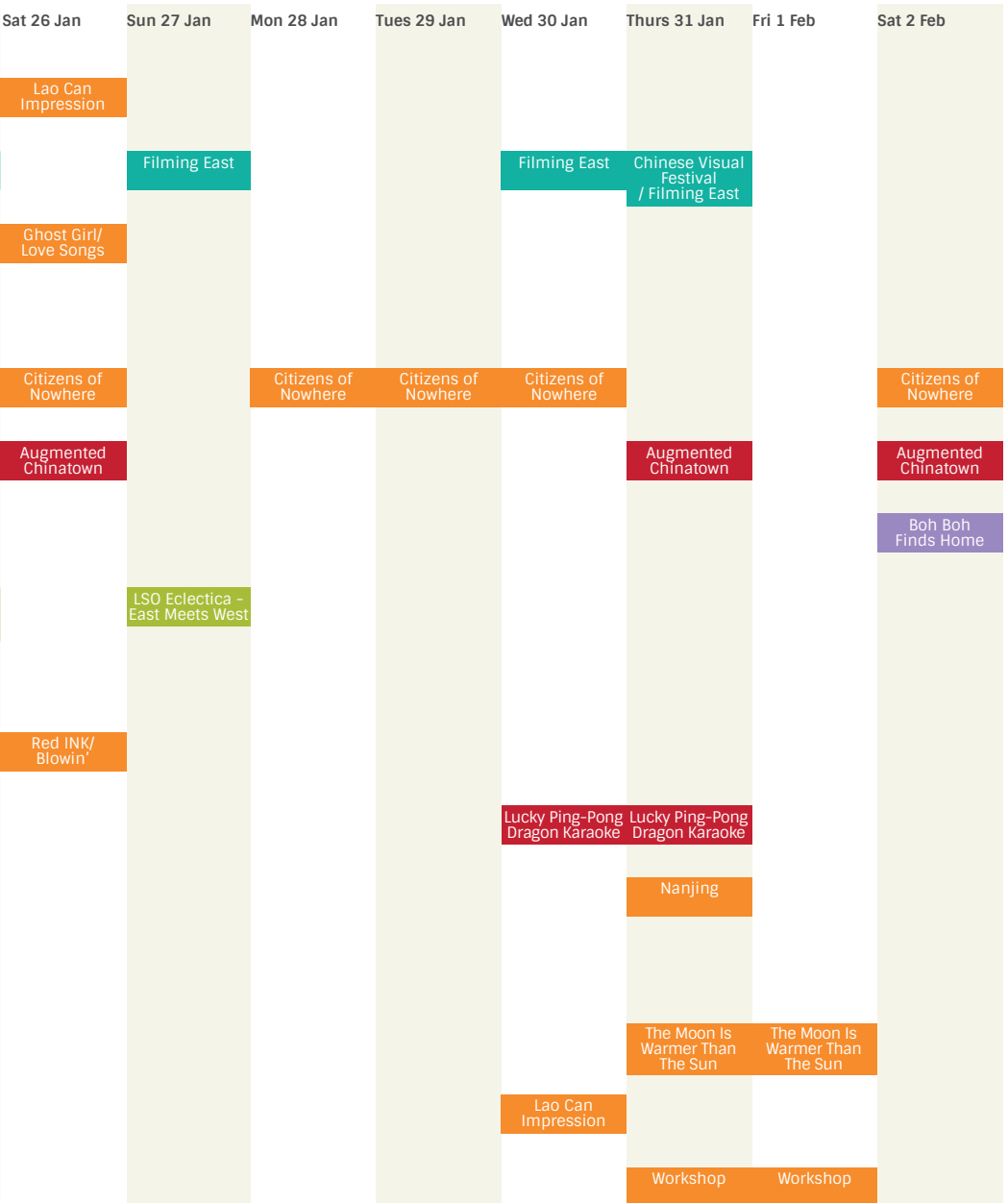
## The Chinese Arts Now Team

An-Ting Chang - Artistic Director  
Ruth Holdsworth - Senior Producer  
Jodie Gilliam - General Manager  
David Hepburn - Branding & Marketing Manager  
Hannah Blamire - Production Manager  
Naying Ren - Assistant Producer  
Clare Taylor - Assistant Producer

Chinese Arts Now Board  
Christine Yau - Chair  
Nicholas James - Vice Chair  
Hanue Chan

# CAN FESTIVAL 2019 TIMELINE







The first international outpost of the acclaimed art-focused restaurant—  
Duddell's Hong Kong

Authentic Cantonese Cuisine.  
Hand-crafted Dim Sum.  
Fine Cocktails.

AT THE HISTORIC  
ST. THOMAS CHURCH  
IN LONDON BRIDGE

St. Thomas Church,  
9A St. Thomas Street,  
London SE1 9RY

+44 (0)20 3957 9932  
reservations.london@duddells.co  
www.duddells.co



**DUDDELL'S LONDON**  
is proud to be the venue of 'Citizens of Nowhere?'



## Principal Sponsor



Supported using public funding by  
**ARTS COUNCIL  
ENGLAND**

## Generous Support From



## Airline Partner



## Festival Partners



## With Thanks To

Attenborough Arts Centre, Bedford Creative Arts, Beijing 707N Theatre, Breakin' Convention, Chepstow Town Council, China Exchange, Clare Sheffield (Strong & Together, Design), Curve Theatre, Dare to Devise, Eddie Lee, Fang-Long Shih, Jerwood Charitable Foundation, Juno Lee, Linda Lee, Ours Travel, Peilot (Chapter Associate Artist Programme), Perrier-Jouët, Photographers' Gallery, Royal Dragon Restaurant and Karaoke, Shoreditch Town Hall, Theatre Royal Plymouth, The Drill Hall Chepstow, Treaty Port Vineyards, Westminster Council.

CHINESE ARTS NOW FESTIVAL  
19 JANUARY - 2 FEBRUARY

2019



Supported using public funding by  
**ARTS COUNCIL  
ENGLAND**



[chineseartsnow.org.uk](http://chineseartsnow.org.uk)



[chineseartsnow](https://www.facebook.com/chineseartsnow)



[chineseartsnow](https://twitter.com/chineseartsnow)

